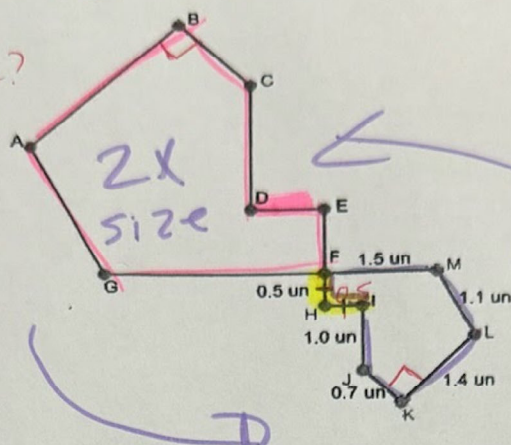


Instructional Task 3 (MTR.5.1)

Figure $ABCDEFGG$ is similar to Figure $LKJIHFM$ with a scale factor of 0.5. Assume that the measure of angle B within Figure $ABCDEFGG$ is 90° .

What angle $\angle JKL$?
 90°



Perimeter of $LKJIHFM$
(add all sides)
 $0.5 + 0.5 + 1.1 + 0.7 + 1.4 + 1.1 + 1.5 = 6.7$

Part A. What is the perimeter of Figure $ABCDEFGG$? $6.7 \times 2 = 13.4$

Part B. What is the length of segment DE ?

Corresponds to IH so $0.5 \times 2 = 1$

Part C. Determine the volume of the generated from Part B.

Part D. If trapezoid $DCFE$ is rotated about line $x = 1$, describe the figure that is generated.

10

Instructional Task 2 (MTR.5.1)

See graph paper

Preimage	Transformation	Image
$A(-1, 0.5)$?	$A'(1, 0.5)$
$B(2, 0)$		$B'(-2, 0)$
$C(3, -3)$		$C'(-3, -3)$

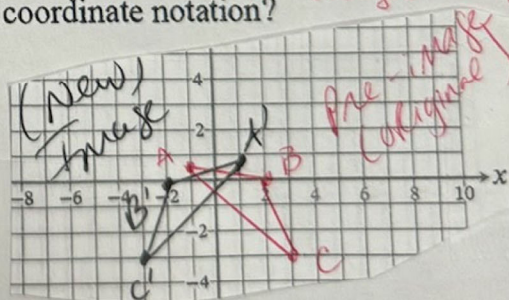
Rigid Motion
Reflection
Rotation
Translation

Part A. Ask students to plot A , B and C and A' , B' and C' on the coordinate plane. What do you notice?

Part B. How can you describe the transformation using words? Explore the patterns among the coordinates of the points of the preimages and the images.

Part C. How can you describe the transformation using coordinate notation?

Rule $(-x, y)$



NOT Rigid Motion Definition